



C o u r s e s 2 0 1 9

Breast Lobar Approach and Ductal Ultrasound

supported by
Real-time Tissue Elastography (RTE)

Aix-en-Provence | France
Organizer: Dr. Dominique Amy

In cooperation with

**Senologic International
Society (SIS)**

**International Breast
Ultrasound School (IBUS)**

Organizer

Dr. Dominique Amy, Radiologist

Course venue*

Centre d'Imagerie
801 av Jean Monnet
13090 Aix-en-Provence, France
Phone: +33 (0)4 42 261-155
E-mail: domamy@wanadoo.fr

*except course in June, that takes place during the Congrès
D'Echographie Générale in Paris. See www.congres-echographie.com

Register

E-mail or fax your name, address, phone n°. to:
Mrs Cécile Fiard
cecile@echographie.com
or fax: +33 4 66 64 29 58
Phone: +33 4 66 68 04 83

Course fee

€ 500,00

Accommodation

TOURISM OFFICE
F-13605 Aix-en-Provence, France
Phone: +33 (0)4 42 161-161
Fax: +33 (0)4 42 161-162
E-mail: infos@aixenprovencetourism.com

Payment course fee

SOCIETE GENERALE CERGY
Bank Code No.: 30003
Bank Branch Code No.: 01658
Account No.: 00020450247
Test No.: 21

With kind support of
Hitachi Medical Systems Europe

HITACHI
Inspire the Next

It couldn't be easier: please mark the date of the course, fill in the application form and send it by post. Or quicker, send it by fax to **+33 4 66 64 29 58**.

Yes, I would like to take part in the following course:

- March 20-21, 2019
 May 15-16, 2019
 June 22-23, 2019 @ Paris
 October 30-31, 2019
 November 27-28, 2019

Number of participants: 1 Pers. 2 Pers. 3 Pers.

Address/stamp

I hereby register to attend the course Breast
Lobar Approach and Ductal Ultrasound supported
by Real-time Tissue Elastography (RTE) in Aix-
en-Provence.

Date

Signature

Registration

OFFE
Cécile Fiard
25, avenue Amédée Bollée

F-30900 Nîmes

Please stamp
sufficiently!

P r e f a c e

Dear Colleagues,

For years, breast examination techniques have failed to give a precise analysis of the mammary gland anatomy. Typically, the “corpus mammae” is unclear, difficult to define and hard to diagnose. Radial Ductal Echography and Lobar Approach is a proven method for very efficient breast analysis. This radial examination technique provides:

- **Understanding of the lobar anatomy**
- **Analysis of all new anatomical changes of the lobules or ducts**
- **Early detection of suspicious millimetric lesions**

The technique is easy to reproduce; independent of the sonographer and interpretable by all clinicians.

Real-time Tissue Elastography (RTE) is a cutting-edge modality for the assessment of tissue elasticity. It has a complementary diagnostic role to the B-mode imaging, providing further criteria for the characterization of lesions. Second generation RTE includes the Strain Ratio, a quantitative method for analyzing the Elastography score.

Instructions in both Lobar Approach and Radial Ductal Echography associated with the new 3D/4D techniques will be given. The success of the course lies in extensive “hands-on” sessions with a small group of participants.

We look forward to seeing you in Aix-en-Provence,

Dr. Dominique Amy

in cooperation with the
“Senologic International Society” and
“International Breast Ultrasound School”

C o u r s e s

Breast Lobar Approach and Ductal Ultrasound supported by Real-time Tissue Elastography (RTE)

- **March** 20-21, 2019
- **May** 15-16, 2019
- **June** 22-23, 2019 @ Paris
- **October** 30-31, 2019
- **November** 27-28, 2019

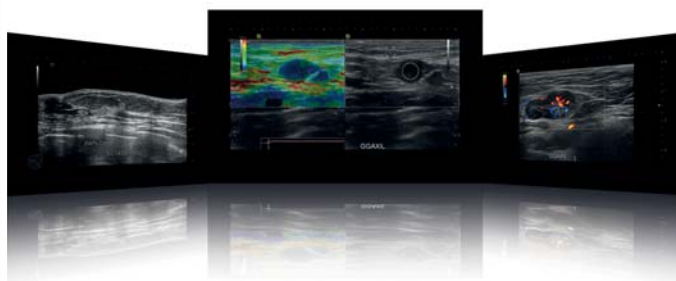
The courses will start Thursday 8.00 am
to Friday 5.00 pm

Course Language

English/French

Tutor

Dr. Dominique Amy, Aix-en-Provence
IBUS and SIS/ISS Board Member



R e g i s t r a t i o n

Breast Lobar Approach and Ductal Ultrasound

supported by
Real-time Tissue Elastography (RTE)

In cooperation with

Senologic International
Society (SIS)

International Breast
Ultrasound School (IBUS)

